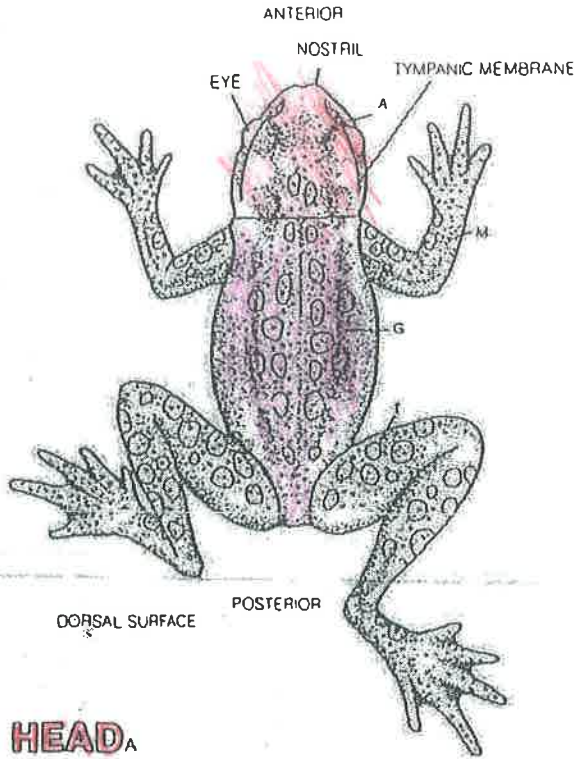
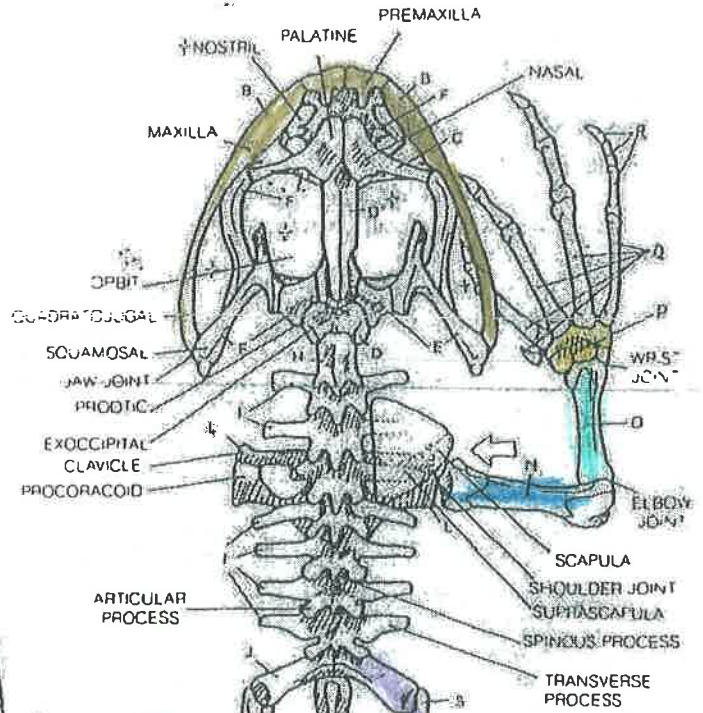




# FROG: I SKELETON.



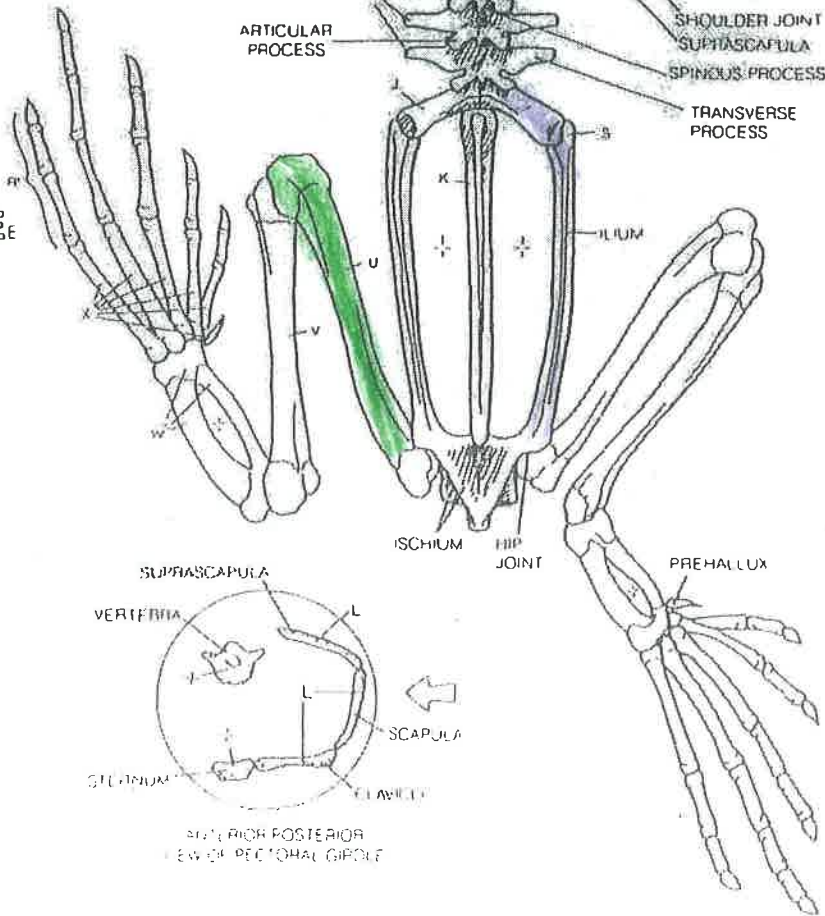
PELVIC GIRDLLE,  
HINDLIMB,  
FEMUR,  
TIBIOFIBULA,  
TARSAL BONES,  
METATARSAL BONES,  
PHALANGES.



HEAD  
SKULL  
UPPER JAW,  
ROOF OF  
NASAL REGION,  
ROOF OF BRAINCASE,  
ROOF OF OTIC CAPSULE,  
BONES OF PALATE.

TRUNK:  
VERTEBRAL COLUMN,  
ATLAS,  
DORSAL VERTEBRA,  
SACRAL VERTEBRA,  
UROSTYLE.

PECTORAL GIRDLLE,  
FORELIMB,  
HUMERUS,  
RADIOULNA,  
CARPAL BONES,  
METACARPAL BONES,  
PHALANGES.





# FROG: III MUSCULATURE (DORSAL SURFACE).

DORSAL FASCIA<sup>A</sup>

MUSCLES OF LOWER JAW<sup>\*</sup>

TEMPORALIS<sup>B</sup>  
DEPRESSOR  
MANDIBULAE<sup>C</sup>

MUSCLES OF FORELIMB<sup>\*</sup>

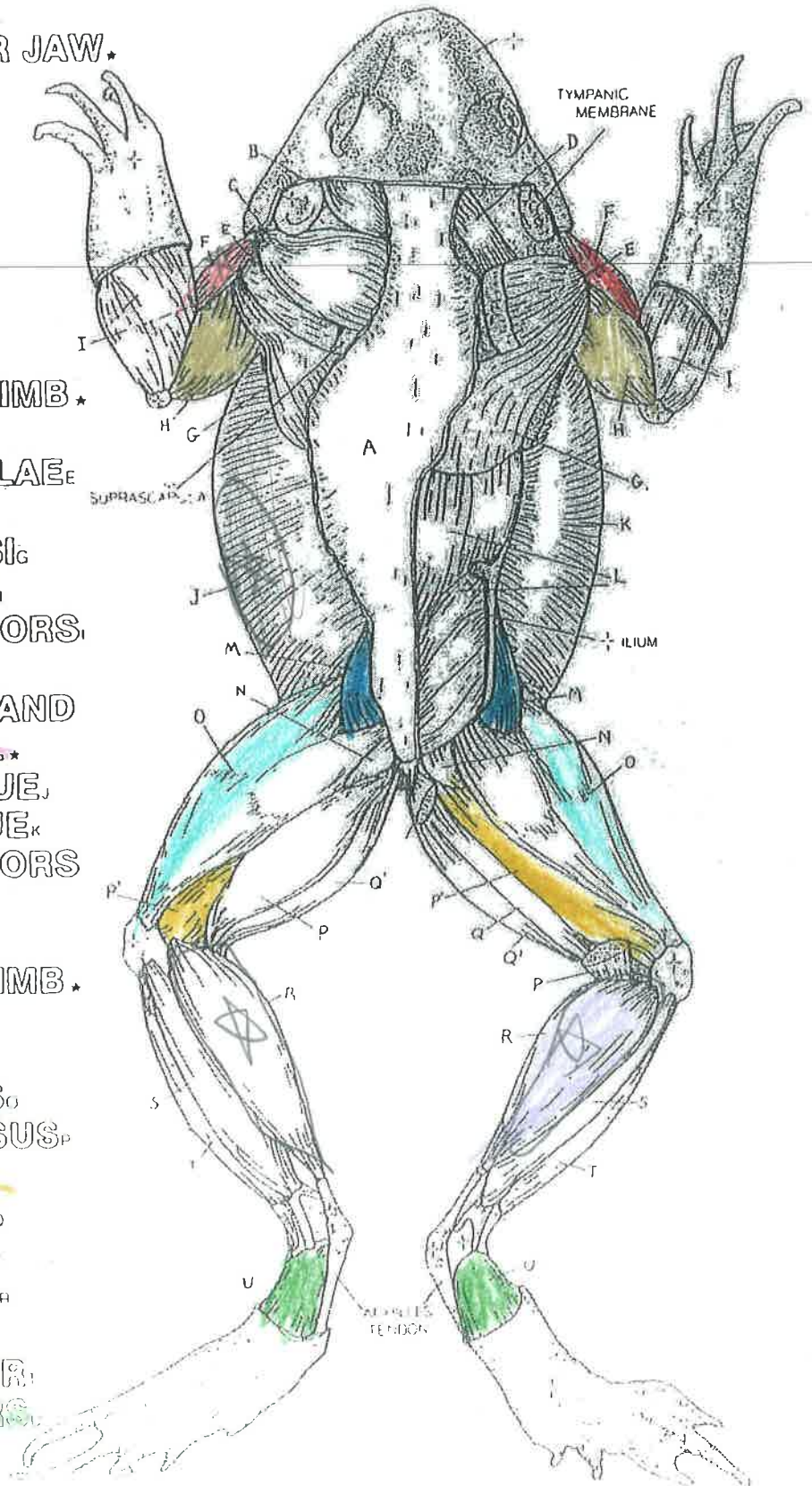
CUCULLARIS<sup>D</sup>  
DORSALIS SCAPULAE<sup>E</sup>  
DELTOID<sup>F</sup>  
LATISSIMUS DORSI<sup>G</sup>  
TRICEPS BRACHII<sup>H</sup>  
COMMON EXTENSORS<sup>I</sup>

MUSCLES OF BACK AND  
ABDOMINAL WALL<sup>\*</sup>

EXTERNAL OBLIQUE<sup>J</sup>  
INTERNAL OBLIQUE<sup>K</sup>  
COMMON EXTENSORS  
OF BACK<sup>L</sup>

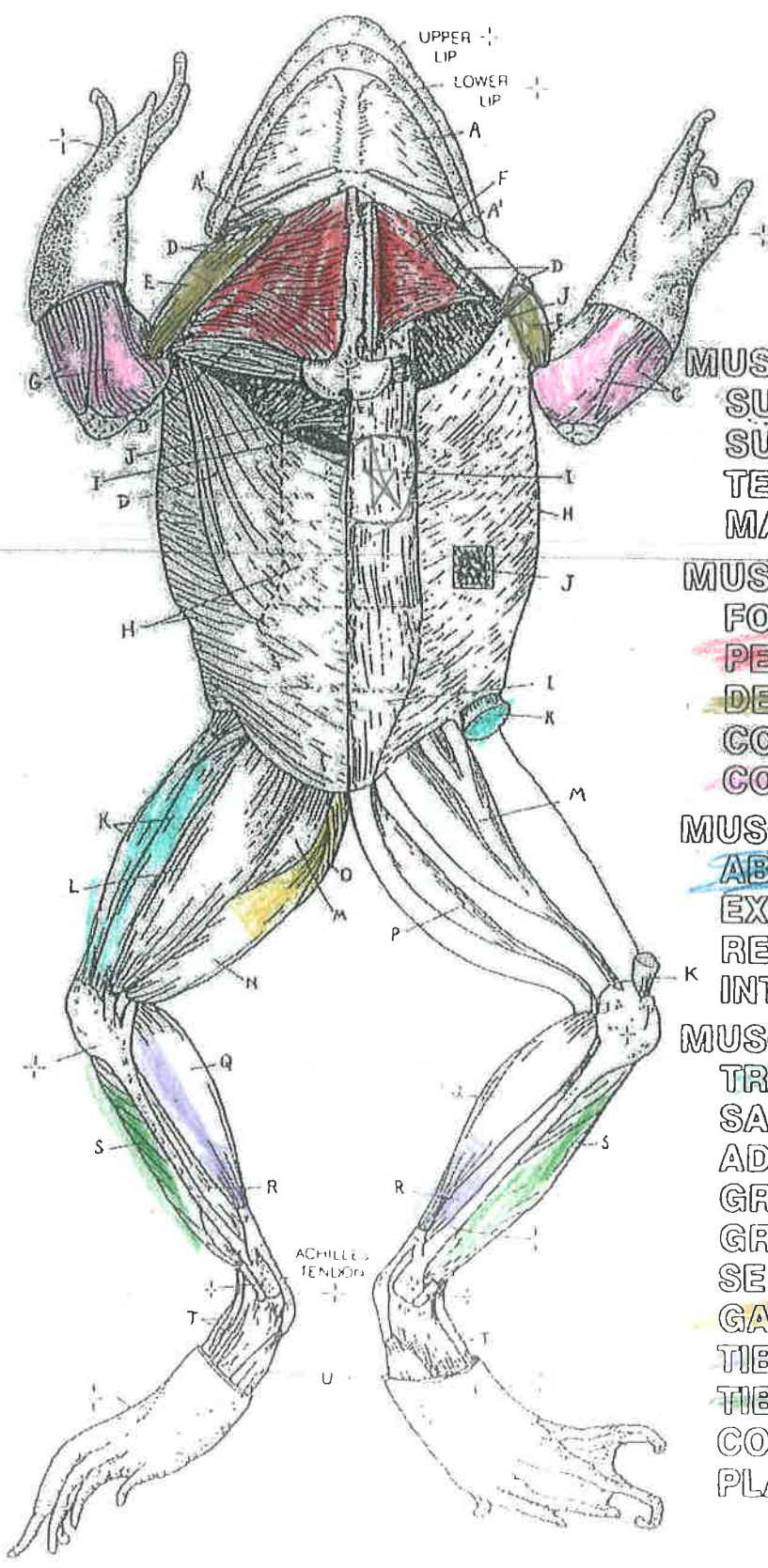
MUSCLES OF HINDLIMB<sup>\*</sup>

GLUTEUS<sup>M</sup>  
PIRIFORMIS<sup>N</sup>  
TRICEPS FEMORIS<sup>O</sup>  
SEMIMEMBRANOSUS<sup>P</sup>  
BICEPS FEMORIS<sup>Q</sup>  
GRACILIS MAJOR<sup>R</sup>  
GRACILIS MINOR<sup>S</sup>  
GASTROCNEMIUS<sup>T</sup>  
PERONEUS<sup>U</sup>  
TIBIALIS ANTERIOR<sup>V</sup>  
COMMON FLEXORS<sup>W</sup>





# FROG: II MUSCULATURE (VENTRAL SURFACE).



MUSCLES OF LOWER JAW.  
 SUBMAXILLARY,  
 SUBHYOID,  
 TEMPORALIS,  
 MASSETER.

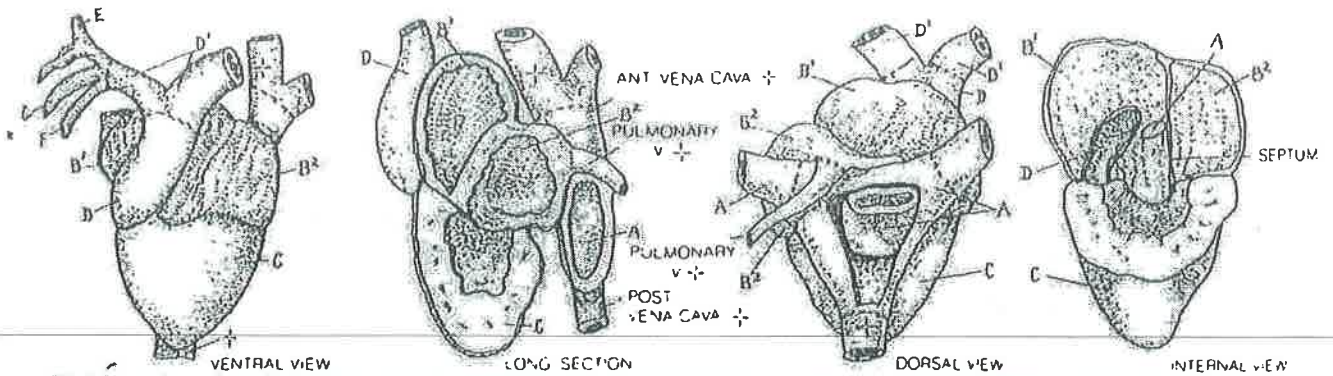
MUSCLES OF THE FORELIMB.  
 PECTORALIS,  
 DELTOID,  
 CORACORADIALIS,  
 COMMON FLEXORS.

MUSCLES OF ANTERIOR ABDOMINAL WALL.  
 EXTERNAL OBLIQUE,  
 RECTUS ABDOMINIS,  
 INTERNAL OBLIQUE.

MUSCLES OF THE HINDLIMB.  
 TRICEPS FEMORIS,  
 SARTORIUS,  
 ADDUCTOR MAGNUS,  
 GRACILIS MAJOR,  
 GRACILIS MINOR,  
 SEMITENDINOSUS,  
 GASTROCNEMIUS,  
 TIBIALIS POSTERIOR,  
 TIBIALIS ANTERIOR,  
 COMMON EXTENSORS,  
 PLANTAR APONEUROSIS.

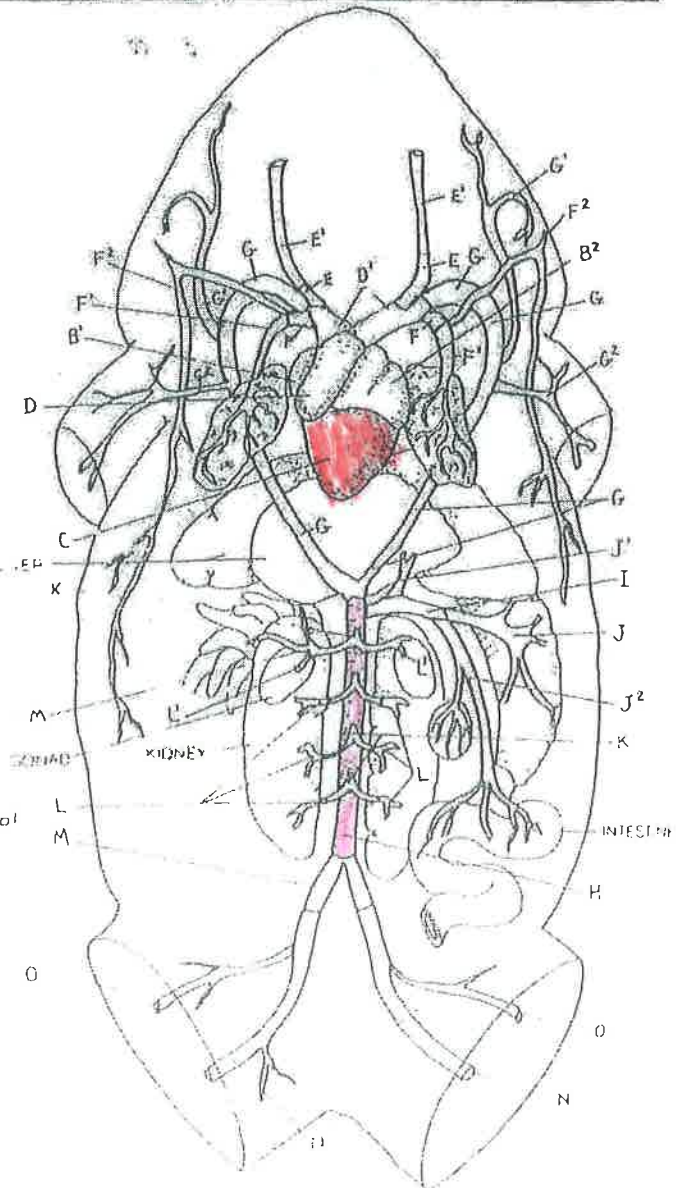


# FROG: V HEART AND ARTERIAL SYSTEM.



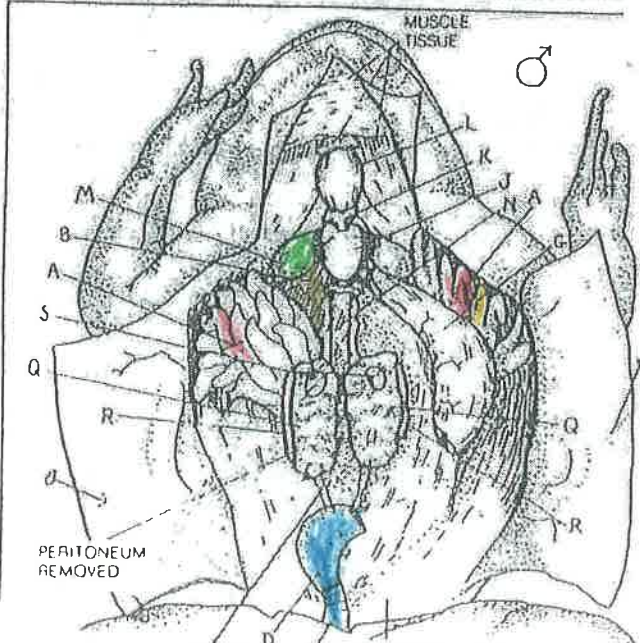
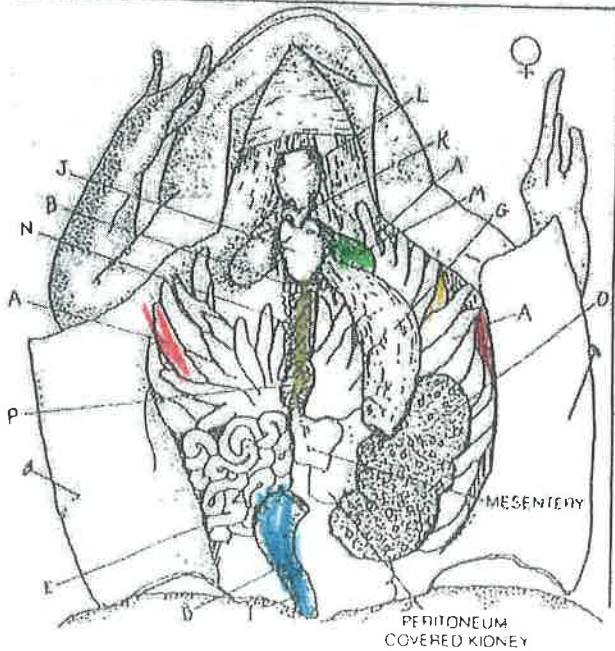
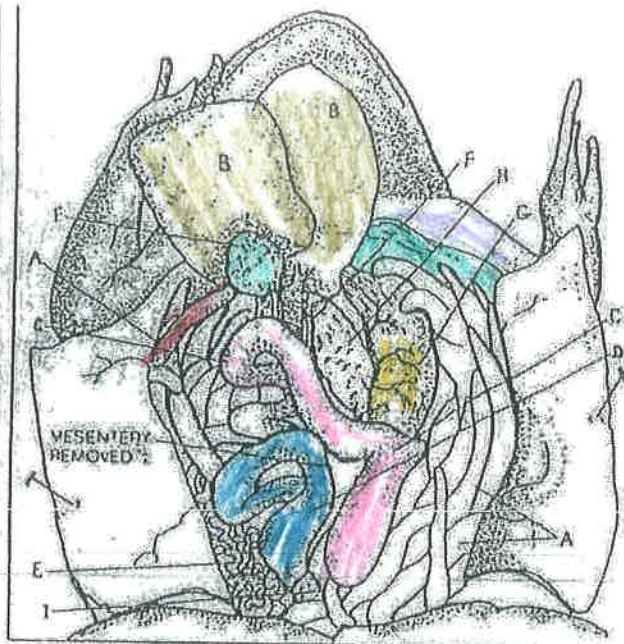
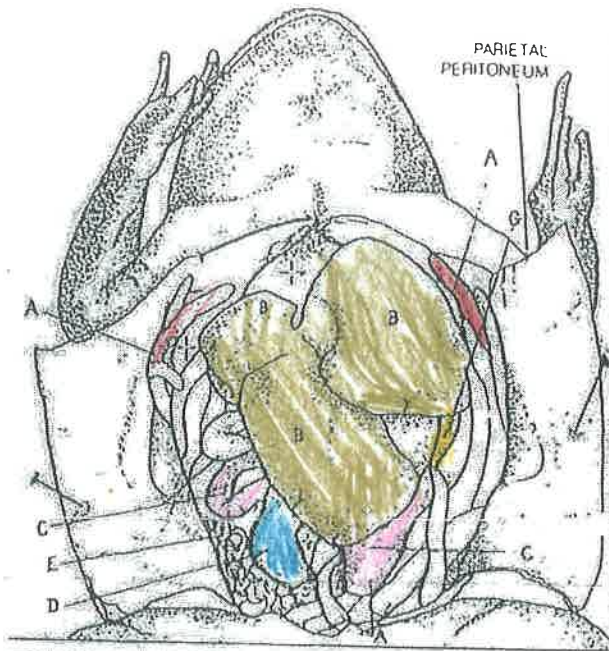
HEART.  
 SINUS VENOSUS.  
 ATRIUM: RIGHT./LEFT.  
 VENTRICLE.  
 CONUS ARTERIOSUS.

ARTERIES.  
 TRUNCUS ARTERIOSUS.  
 CAROTID ARCH:  
 INT. CAROTID A.<sub>E'</sub>  
 PULMOCUTANEOUS ARCH.  
 PULMONARY A.<sub>F'</sub>  
 CUTANEOUS A.<sub>F'</sub>  
 SYSTEMIC ARCH:  
 OCCIPITOVERTEBRAL A.<sub>G'</sub>  
 SUBCLAVIAN A.<sub>G'</sub>  
 DORSAL AORTA.  
 COELIACOMESENTERIC A.<sub>I'</sub>  
 COELIAC A.<sub>J'</sub>  
 HEPATIC A.<sub>J'</sub>  
 MESENTERIC A.<sub>J'</sub>  
 UROGENITAL A.<sub>K'</sub>  
 RENAL A.<sub>L'</sub>  
 GENITAL A.<sub>L'</sub>  
 COMMON ILIAC A.<sub>M'</sub>  
 SCIATIC A.<sub>N'</sub>  
 FEMORAL A.<sub>O'</sub>





# FROG: IV DISSECTION.



FAT BODY<sub>A</sub>

LIVER<sub>B</sub>

SMALL INTESTINE<sub>C</sub>

LARGE INTESTINE<sub>D</sub>

OVIDUCT<sub>E</sub>

GALL BLADDER<sub>F</sub>

STOMACH<sub>G</sub>

PANCREAS<sub>H</sub>

RECTUM<sub>I</sub>

HEART<sub>J</sub>

CONUS/TRUNCUS

ARTERIOSUS<sub>K</sub>

LARYNX<sub>L</sub>

LUNGS<sub>M</sub>

POSTCAVAL VEIN<sub>N</sub>

OVARY<sub>O</sub>

SPLEEN<sub>P</sub>

KIDNEY<sub>Q</sub>

ADRENAL GL<sub>R</sub>

TESTES<sub>S</sub>

# FROG: VI VENOUS SYSTEM.

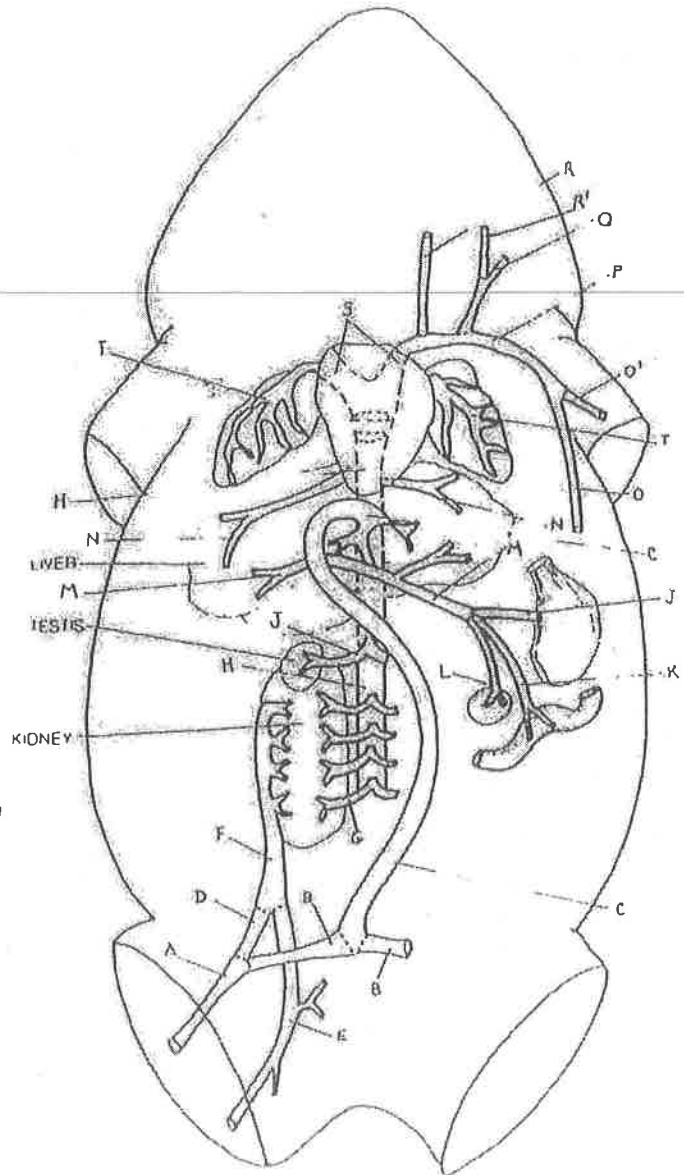
FEMORAL V.<sub>A</sub>  
 PELVIC V.<sub>B</sub>  
 ABDOMINAL V.<sub>C</sub>

ILIAC V.<sub>D</sub>  
 SCIATIC V.<sub>E</sub>  
 RENAL PORTAL V.<sub>F</sub>  
 RENAL V.<sub>G</sub>  
 POSTERIOR VENA CAVA<sub>H</sub>  
 GONADAL V.<sub>I</sub>

GASTRIC V.<sub>J</sub>  
 MESENTERIC V.<sub>K</sub>  
 SPLENIC V.<sub>L</sub>  
 HEPATIC PORTAL V.<sub>M</sub>  
 HEPATIC V.<sub>N</sub>

MUSCULOCUTANEOUS V.<sub>O</sub>  
 BRACHIAL V.<sub>O'</sub>  
 SUBCLAVIAN V.<sub>P</sub>  
 BRACHIOCEPHALIC V.<sub>P'</sub>  
 EXTERNAL JUGULAR V.<sub>R</sub>  
 INTERNAL JUGULAR V.<sub>R'</sub>  
 ANTERIOR VENA CAVA<sub>S</sub>

PULMONARY V.<sub>T</sub>



VENTRAL  
 VIEW



# FROG: VII

## DIGESTIVE SYSTEM.

BUCCAL CAVITY\*

TONGUE<sub>A</sub>

MAXILLARY

TEETH<sub>B</sub>

VOMERINE

TEETH<sub>D</sub>

INTERNAL  
NOSTRIL<sub>C</sub>

AUDITORY  
ORIFICE<sub>D</sub>

PHARYNX<sub>E</sub>

GLOTTIS<sub>F</sub>

ESOPHAGUS<sub>G</sub>

STOMACH<sub>H</sub>

SMALL INTESTINE

LARGE INTESTINE

CLOACA<sub>K</sub>

LIVER

GALL BLADDER<sub>M</sub>

HEPATIC DUCT<sub>N</sub>

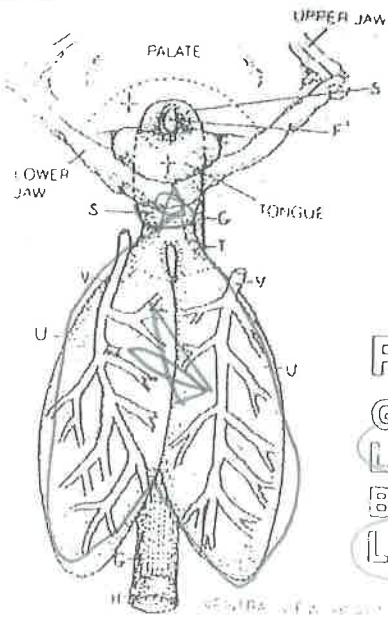
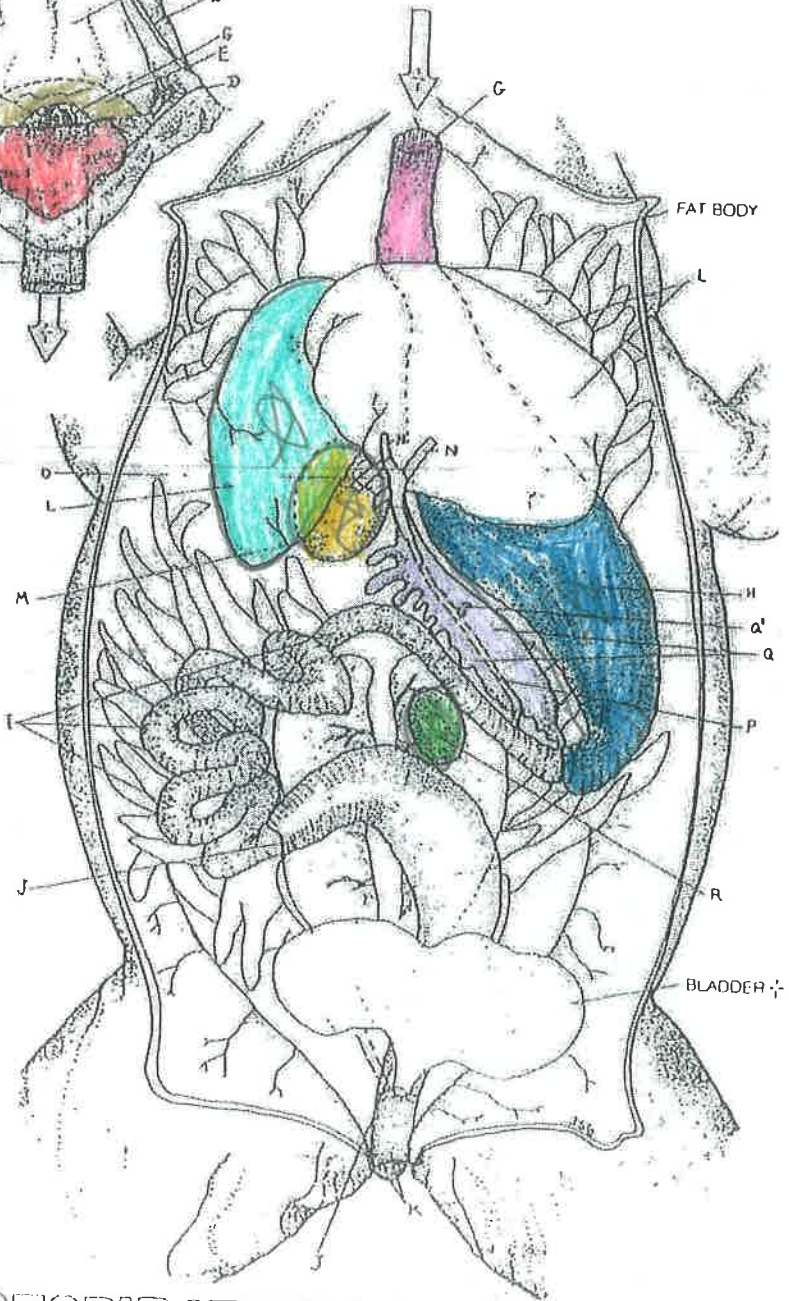
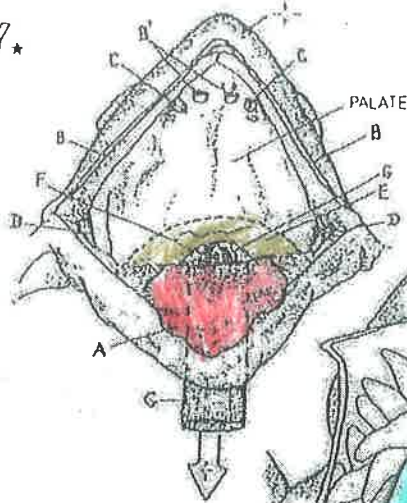
CYSTIC DUCT

COMMON BILE DUCT<sub>P</sub>

PANCREAS<sub>Q</sub>

PANCREATIC DUCT<sub>R</sub>

SPLEEN<sub>S</sub>



## RESPIRATORY SYSTEM.

GLOTTIS<sub>F</sub>

LARYNX<sub>G</sub>

BRONCHUS<sub>H</sub>

LUNG<sub>I</sub>

PULMONARY  
VESSELS<sub>J</sub>



# FROG: IX NERVOUS SYSTEM.

## BRAIN\*

OLFACTORY LOBE.

CEREBRUM.

THALAMUS.

PINEAL GL.

OPTIC LOBE.

CEREBELLUM.

MEDULLA OBLONG.

## SPINAL CORD.

## CRANIAL NERVES.

I OLFACTORY N.

II OPTIC N.

III, IV, VI Ns.

TO EYE.

V TRIGEMINAL N.

VII FACIAL N.

VIII AUDITORY N.

IX GLOSSOPHARYNGEAL N.

X VAGUS N.

## SPINAL NERVES.

HYPOGLOSSAL N.

BRACHIAL PLEXUS/BRS.

4TH-6TH SPINAL N.

SCIATIC PLEXUS/BRS.

SCIATIC N.

10TH SPINAL N.

